

AIR-LOC

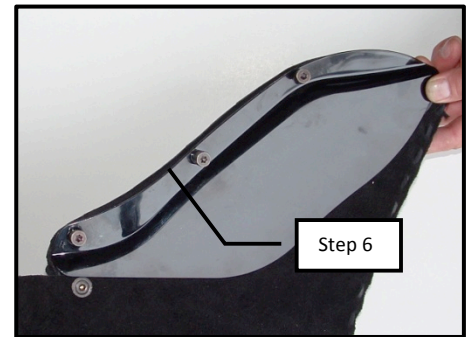
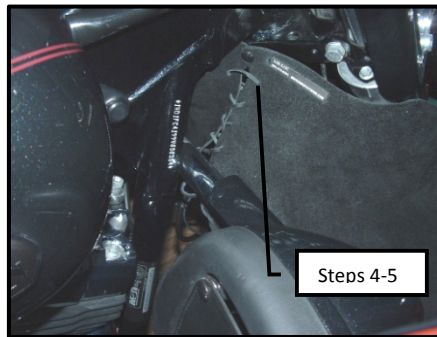
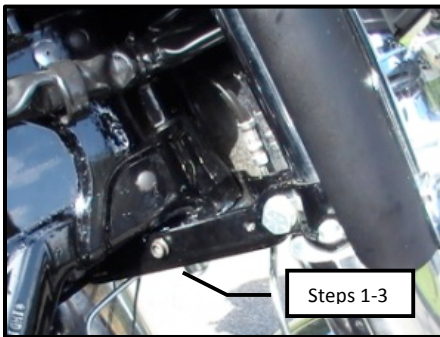
Built By BECK INNOVATIONS

Installation Instructions for Non-Adjustable model

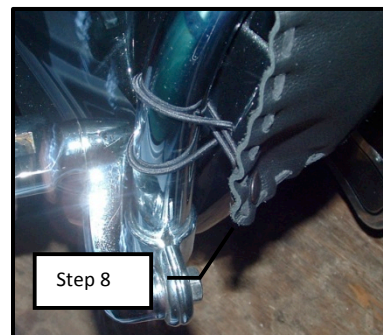
The initial install is under 10 minutes. There after, on and off takes less then a minute.

Contents include: AIR-LOC (genuine black leather hide); (2) leather attachments; (1) snap stud screw; (1) plastic insert; (2) mounting cords

1. With the steering all the way to the left, push plastic insert into the center hole located behind the upper fairing at the bottom of the fork steering post. **NOTE: If you have a wind deflector mounted here, it will need to be removed.**
2. Gently tap the insert all the way in with a small hammer making sure not to contact the painted surface on the forks or any other part of your bike.
3. Install the snap stud screw into the insert using a Torx T-20 bit. Do not over tighten.



4. The AIR-LOC is positioned behind the forks. The three snaps are at the top and the suede side faces the rear of your bike.
5. Start by snapping the AIR-LOC to center of the forks while standing on the right side with the steering **all the way to left**.
6. Attach the right side by removing the plastic wind deflector on the upper fairing. Then, one at a time, re-insert the screws through the deflector then through the leather attachment. Re-connect the deflector onto the fairing with the leather now attachment between the plastic deflector and the fairing.
7. Attach the lower mounting cords to the crash bar by looping one end of the mounting cord around bar then back through the loop. **They need to mount to the bar above highway pegs or as close to the top as possible.** This will prevent over stretching the cords. If you have Soft Lower, fold back the top portion to expose the crash bar. Attach the mounting cord to the bar. Make sure to pull end tight so as much of the cord extends out behind the soft lowers as possible. Re-attach the top portion of the lowers so cord is exposed through the hole in the vinyl created for highway pegs.
8. Now snap the lower corner of the AIR-LOC to the cord.
9. Turn the steering **all the way to the right**, then move to the left side of the bike and install the left side the same way as the right.



This product is designed for cool weather. Not recommended if temperature is above 70 degrees unless it's raining. Maintain the leather by keeping it soft and keep your lower fairing clean.